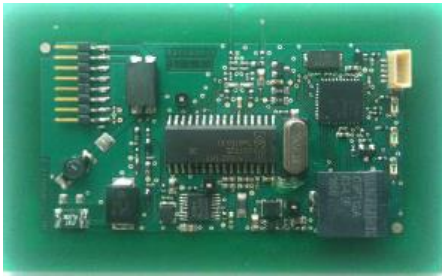


# EFT-CLReader-LP

Low-power RFID/NFC reader

REF : 1408-01



## DESCRIPTION

The EFT-CLReader-LP is a low-power RFID/NFC reader board for building a wide range of contactless applications, having stringent power consumption constraints.

An optional additional non-volatile memory device can be mounted allowing application specific data storage such as a user database management system.

With the EFT-CLReader-LP, EFF'INNOV Technologies offers a cutting-edge product for applications demanding very low-power, high-performance and flexible contactless readers.



## KEY FEATURES

- Integrated Antenna
- LEDs and buzzer
- RS-232 communication
- Wide input voltage range (5V-16V)
- Bootloader for easy firmware upload
- Robust power-supply filtering
- Proximity operating distance up to 80 mm
- Supports popular tag technologies
  - ISO/IEC-14443/A
  - ISO/IEC 14443/B
  - MIFARE (Mini, 1K, 4K, Ultralight)
  - MIFARE Desfire
  - ISO/IEC 15693
  - I-CODE

## KEY

- Suitable for battery powered equipment
- Easy plug-and-use
- Highly flexible and customizable for specific requirements



## TARGETED APPLICATIONS

- Industrial, services or residential facilities access control
- Operating assets remotely (sharing/tracking goods, vehicles or services)
- Infrastructure-based identification systems
- Vehicle fleet management

## Contact

For more information, please contact [sales@effinnov.com](mailto:sales@effinnov.com)

[www.effinnov.com](http://www.effinnov.com)

EFF'INNOV Technologies  
2 Esplanade Anton Philips, Bat. 5 - Campus EffiScience - 14460 Colombelles - France  
Tel : +33 (0)2 3134 1400 / [contact@effinnov.com](mailto:contact@effinnov.com)

# EFT-CLReader-LP

Low-power RFID/NFC reader

REF : 1408-01

**Technical data are subject to change without notice**

General Specifications	Min	Typ	Max	Unit
Operating Temperature	-20	25	65	°C
Storage Temperature	-20	25	65	°C

Electrical Specifications	Min	Typ	Max	Unit
Operating Voltage	5	12	16	V
Supply current / Standby mode	--	500	700	µA
Supply current / Active mode	--	70	100	mA
Average supply current	--	2	--	mA

Interface	
RS-232	115200bauds, 8bits, parity None, 1 stop bit

RF Specifications	
Frequency	13.56 MHz
Reading distance	Up to 80mm
Antenna	Integrated
Protocol	ISO14443A, ISO14443B, ISO15693, ICode SLI

RF Specifications			
Pin	Interface	Pin	Interface
1	RXD	5	NC
2	TXD	6	NC
3	NC	7	VCC
4	NC	8	GND

Mechanical Dimensions	Width	Length	Height
	53 mm	85 mm	5.7 mm

## Ordering Information

Type Number	Description
EFT-CLReader-LP-SxNO	Low power contactless reader (serial port), OEM version
EFT-CLReader-LP-SxNO-4M	Low power contactless reader (serial port, 4Mbits Flash), OEM version

Reproduction is prohibited without the consent of EFF'INNOV TECHNOLOGIES. All information contained in this document is provided "AS IS". EFF'INNOV TECHNOLOGIES assumes no responsibility for its accuracy and/or completeness. In no event will EFF'INNOV TECHNOLOGIES be liable for damages arising directly or indirectly from any use of the information contained in this document.

[www.effinnov.com](http://www.effinnov.com)

EFF'INNOV Technologies  
2 Esplanade Anton Philips, Bat. 5 - Campus EffiScience - 14460 Colombelles - France  
Tel : +33 (0)2 3134 1400 / [contact@effinnov.com](mailto:contact@effinnov.com)